



◆ **HERMETO CODEX** ◆
THE PATH OF THE CREATOR



SCROLL

VII

◆—————◆
**THE LIVING
CONTINUUM**
◆—————◆



HERMETO CODEX

THE PATH OF THE CREATOR



SCROLL VII

THE LIVING CONTINUUM

INDEX

- II. THE LAW OF CONTINUITY.
- III. RENEWAL WITHOUT RUPTURE.
- V. THE TRANSMISSION OF UNDERSTANDING.
- VI. THE MULTIPLICATION OF ARCHITECTS.
- VIII. THE LIVING MYTH.
- X. PRESENCE WITHOUT CENTRALITY.
- XI. RENEWAL ACROSS GENERATIONS.
- XIII. THE CLOSED CIRCLE.

◆ BUILD IN SILENCE,
THE CHAIN REMEMBERS. ◆



THE LAW OF CONTINUITY

CREATION IS NOT A SINGLE ACT. IT IS A SUSTAINED CONDITION.

WHAT BEGINS WITH INTENTION MUST BE MAINTAINED THROUGH REPETITION, CARE, AND RENEWAL. CONTINUITY IS NOT ACHIEVED BY RESISTING CHANGE, BUT BY PRESERVING COHERENCE WHILE CHANGE OCCURS.

THE ARCHITECT UNDERSTANDS THAT ENDINGS ARE OFTEN FAILURES OF ATTENTION, NOT INEVITABILITIES. WHAT IS TENDED REMAINS PRESENT. WHAT IS IGNORED DISSOLVES. CONTINUITY IS AN ACTIVE DISCIPLINE.



RENEWAL WITHOUT RUPTURE

EVERY LIVING SYSTEM MUST
REFRESH ITS MEANING.
RENEWAL DOES NOT REQUIRE
ABANDONING FORM. IT REQUIRES
REMOVING STAGNATION. WHEN
SYMBOLS LOSE CLARITY, WHEN
LANGUAGE DULLS, WHEN RITUAL
BECOMES HABIT, ATTENTION MUST
RETURN.

THE ARCHITECT RENEWS BY
REFINING, NOT REPLACING.
ADJUSTMENTS ARE MADE TO
RESTORE ALIGNMENT, NOT TO
CHASE NOVELTY. CHANGE THAT
BREAKS CONTINUITY IS NOT
RENEWAL, IT IS RUPTURE.
RENEWAL PRESERVES IDENTITY BY
SHARPENING IT.



CRUMENA MEA ETHICAM SEQUITUR, NON AFFECTUS.

THE TRANSMISSION OF UNDERSTANDING

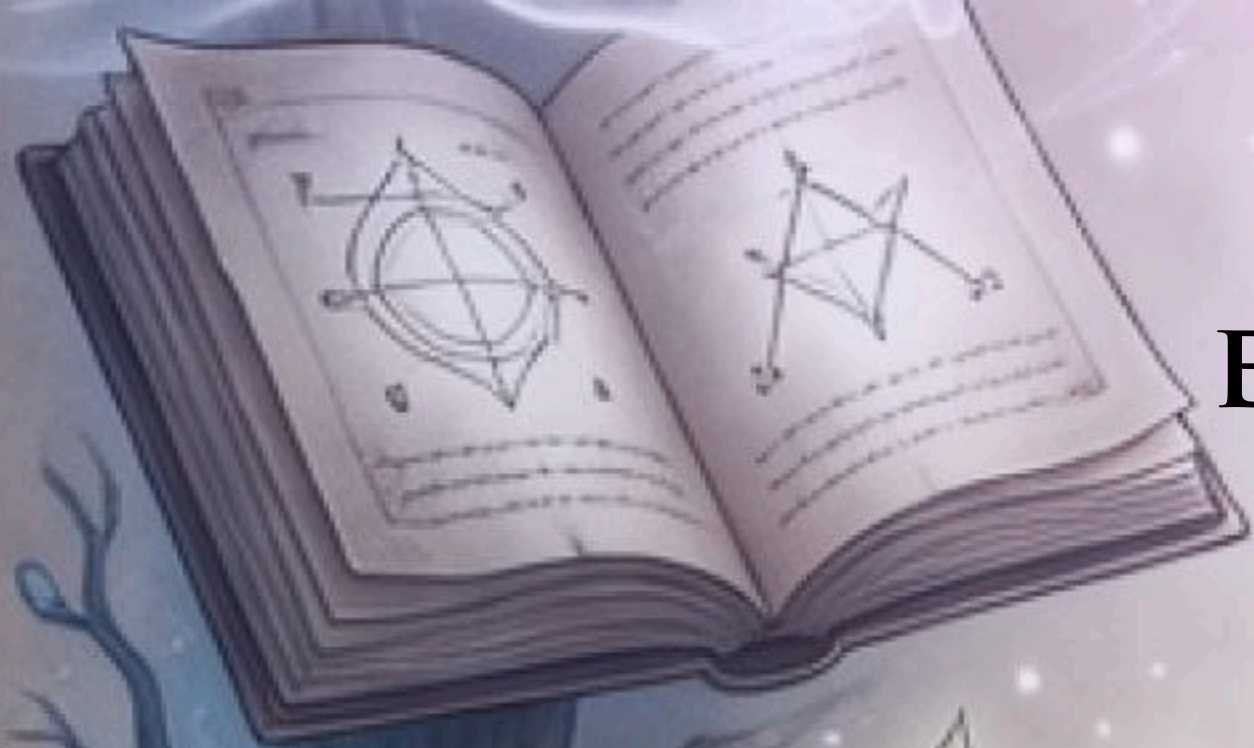
WHAT CANNOT BE
TRANSMITTED WILL NOT
SURVIVE.



THE ARCHITECT MUST ENSURE
THAT KNOWLEDGE, VALUES, AND
PRACTICES ARE SHARED IN A
FORM OTHERS CAN CARRY.
AUTHORITY IS NOT
TRANSMITTED.

UNDERSTANDING IS.
TEACHING OCCURS THROUGH
EXPLANATION, REPETITION, AND
EXAMPLE. SILENCE WITHOUT
GUIDANCE CREATES
MYTHOLOGY. GUIDANCE
WITHOUT AUTONOMY CREATES
DEPENDENCE.

TRANSMISSION SUCCEEDS
WHEN OTHERS ACT CORRECTLY
WITHOUT INSTRUCTION.



THE MULTIPLICATION OF ARCHITECTS

AT MATURITY, CREATION NO LONGER DEPENDS ON A SINGLE WILL. OTHERS BEGIN TO ACT WITH COHERENCE, NOT IMITATION. THEY MAKE DECISIONS ALIGNED WITH THE STRUCTURE, NOT BECAUSE THEY ARE TOLD TO, BUT BECAUSE THEY UNDERSTAND WHY.

◆
THIS IS NOT DECENTRALIZATION AS IDEOLOGY. IT IS DISTRIBUTION OF RESPONSIBILITY THROUGH SHARED COMPREHENSION. WHEN MANY CAN ACT AS ONE, CONTINUITY BECOMES **RESILIENT**.





CUM INTENTIONE CUDO, CUM RHYTHMO PUBLICO.



THE LIVING MYTH

OVER TIME, THE CREATION
BECOMES A REFERENCE.
STORIES EMERGE, NOT AS
MARKETING, BUT AS MEMORY.
THESE NARRATIVES ORIENT NEW
PARTICIPANTS AND REMIND
OLDER ONES WHY THE
STRUCTURE EXISTS.



THE ARCHITECT DOES NOT
CONTROL THE MYTH. THEY
ENSURE IT REMAINS TRUTHFUL.
DISTORTION BEGINS WHEN
EXAGGERATION REPLACES
ACCURACY.

A LIVING MYTH GUIDES
BEHAVIOR **WITHOUT** COMMAND.





CREATIO DISCIPLINA EST, LARVAM INSPIRATIONIS GERENS.

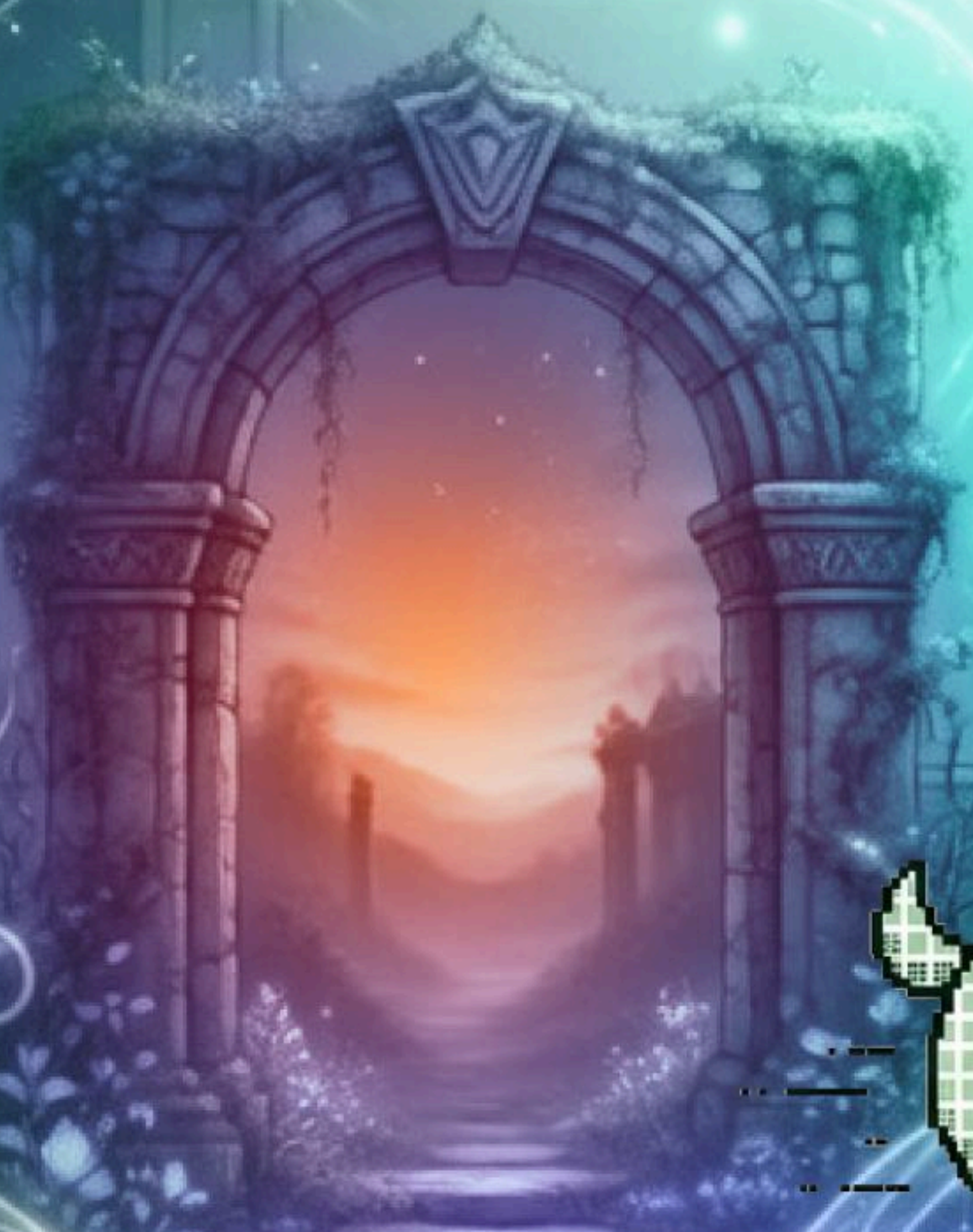


PRESENCE WITHOUT CENTRALITY

CONTINUITY DOES NOT REQUIRE
CONSTANT CENTRAL ACTION.
THE ARCHITECT REMAINS PRESENT,
BUT NOT DOMINANT. GUIDANCE
BECOMES SUBTLE. INTERVENTION
BECOMES RARE. STABILITY REPLACES
URGENCY.



THIS SHIFT IS NOT WITHDRAWAL.
IT IS MATURATION. THE STRUCTURE
NO LONGER NEEDS CONSTANT
CORRECTION BECAUSE PRINCIPLES
HAVE BEEN INTERNALIZED.
PRESENCE WITHOUT CENTRALITY
ALLOWS THE SYSTEM TO **BREATHE**.





RENEWAL ACROSS GENERATIONS

TIME INTRODUCES NEW PARTICIPANTS WITH DIFFERENT CONTEXTS. CONTINUITY REQUIRES TRANSLATING VALUES WITHOUT DILUTING THEM. LANGUAGE MAY CHANGE. TOOLS MAY EVOLVE. PRINCIPLES MUST REMAIN INTACT.



THE ARCHITECT PROTECTS THE CORE WHILE ALLOWING EXPRESSION TO ADAPT. REFUSING TRANSLATION FREEZES THE SYSTEM. ALLOWING DISTORTION DISSOLVES IT. CONTINUITY LIVES IN CAREFUL **TRANSMISSION** ACROSS TIME.



TEMPLE OF CORRESPONDENCE

THE ARCHIVES
OF AKASHA



GROVE OF
SYMBIOSIS



THE HALL OF
ECHOES

TEMPLE OF
CORRESPONDENCE

PATH OF
PILGRIMS

THE SILENT SHORE



THE CLOSED CIRCLE

THE PATH RETURNS TO ITS ORIGIN. CREATION FEEDS CREATION. WHAT WAS LEARNED BECOMES PREPARATION FOR THE NEXT ACT. THE ARCHITECT REMAINS, NOT AS ORIGINATOR, BUT AS PARTICIPANT WITHIN A LIVING PATTERN.

THE CIRCLE DOES NOT CLOSE THROUGH DISAPPEARANCE, BUT THROUGH INTEGRATION. THE WORK CONTINUES BECAUSE IT HAS LEARNED HOW TO SUSTAIN ITSELF. WHAT ENDURES DOES NOT CONCLUDE. IT **CONTINUES**.





E N D O F S C R O L L V I I

